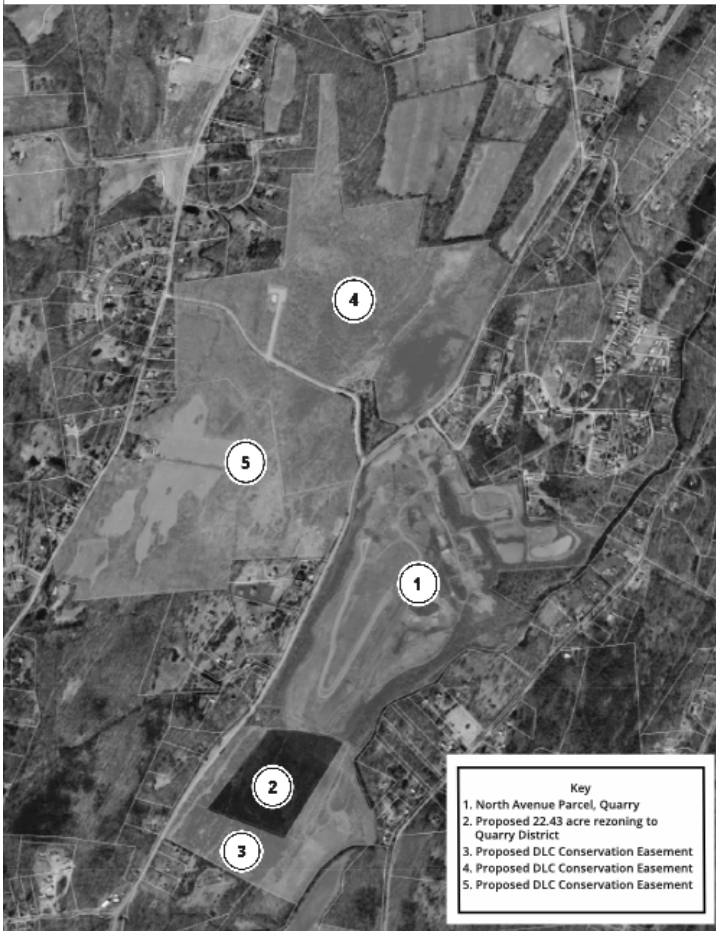


# STRAIGHT TALK

## Latest News from the Pleasant Valley Quarry

peckhammaterialspleasantvalleyquarry.com



## Our Petition To the Town

As one of the larger landholders in the community, Peckham Materials asked to partner with the Dutchess Land Conservancy (DLC) to determine if any of our properties would be suitable to put into permanent conservation easements. This would limit the future use and development of those parcels in alignment with the DLC and the Town of Pleasant Valley’s Comprehensive Plan and Town Open Space Plan. In addition to restricting future development, these conditions would eliminate the possibility of any future mining on these easement properties.

After thoughtful collaboration, Peckham Materials and the DLC are proposing to place 295 acres into DLC Conservation Easements.

To offset the loss of development rights and mineral resources, Peckham Materials is asking to rezone 22.43 acres to Quarry District. One of the proposed conservation easements

**295 acres will be protected through land conservation easements.**

will buffer the 22.43 acres to ensure that the Quarry District will never again be expanded. If rezoning is approved by the town, **this will not allow the area to be mined.** Rather, an extensive mining permit modification will be undertaken and reviewed by the NYS Dept. of Environmental Conservation to

determine if mining can be done in a manner to protect the environment and our neighbors, as well as planning for future reclamation of the property. Our operation provides critically required materials for infrastructure building and more than 45 well-paying jobs. Twenty-nine of our employees live in Dutchess County and 14 of those live in the Town of Pleasant Valley. We created a website to explain this project and our operation in detail.

At Peckham our agenda is simple: Our Mission is to produce high quality, affordable construction materials and provide great jobs. **This rezoning will not increase our production or sales,** but will allow us to sustainably plan into the future. We will continue to operate our quarrying operation following all the rules and regulations that govern our business. We will continue to provide good paying jobs directly supporting more than 45 families. We will continue to produce the raw materials required for roads, bridges, hospitals—all those uses that contain rock, concrete or asphalt our community utilizes every day. **Can you please email your support to [townclerk@pleasantvalley-ny.gov](mailto:townclerk@pleasantvalley-ny.gov)**

**This swap of acreage—295 acres put into Conservation Easement and 22.43 acres placed into the Quarry District—seems pretty straightforward. However, some big misperceptions exist, and we hope you will take the time to learn more about our project and support us.**

## Safety Never Takes A Day Off

From rigorous training programs to utilizing the latest technologies, Peckham strives at all times to follow the safety slogan—Safety Never Takes A Day Off.

We understand that the construction resources we provide are critically needed and we take our responsibilities very seriously. Top of the list is keeping our employees and our communities safe every day.

## Check out our new website!

One of our adjacent neighbors asked us to do a better job of telling our story, “Why don’t you create a website?” We thought

that was a great idea! Our new website describes our quarry operations, our team, and brings you news about Peckham’s involvement in local community events. On the site you can fill out a contact form to schedule a tour and learn more about our operations. Please visit our site today and book a tour.

**[peckhammaterialspleasantvalleyquarry.com](http://peckhammaterialspleasantvalleyquarry.com)**



## An important community resource

At the Peckham Pleasant Valley quarry, the rock is perfectly suited to be crushed and sized for a wide variety of uses. This rock is a major component in roads, bridges, foundations and all types of building construction. It is also a critical component for erosion control along riverways and wetlands, and is the largest component of asphalt pavement and ready-mix concrete producing everything from sidewalks and streets to buildings.

Peckham holds permits and has regular inspections by the following agencies:

The Mine Safety and Health Administration (MSHA), Occupational Safety and Health Administration (OSHA), The New York State Department of Environmental Conservation and the Federal Environmental Protection Agency (EPA).

A diverse team is involved in both the technical support, as well as the day-to-day operations at the quarry. It is very common at Peckham to see several generations of families working for our company. We like to think of our company as an extended family with employees that care about each other and the communities where we operate.

**Peckham Industries, Inc**  
**410 North Ave.**  
**Pleasant Valley NY, 12569**